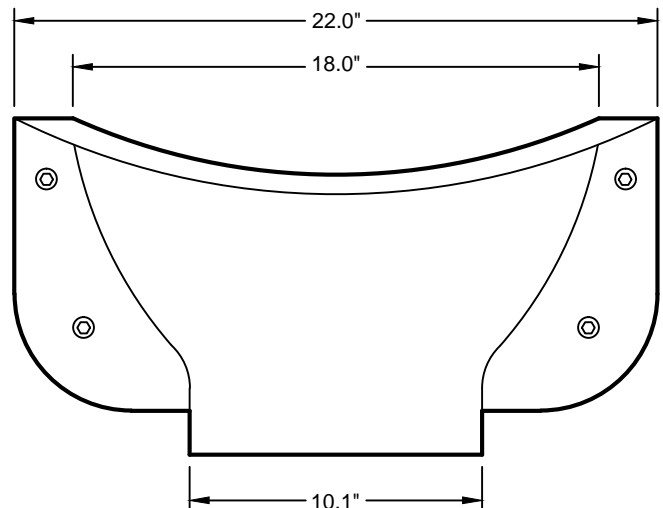
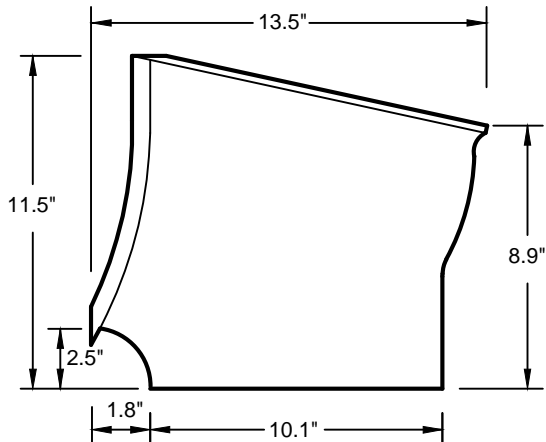
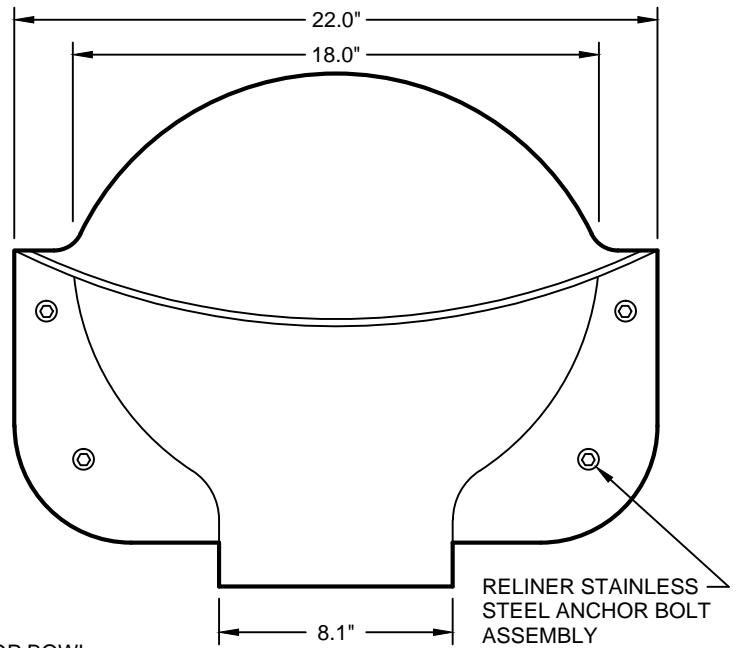
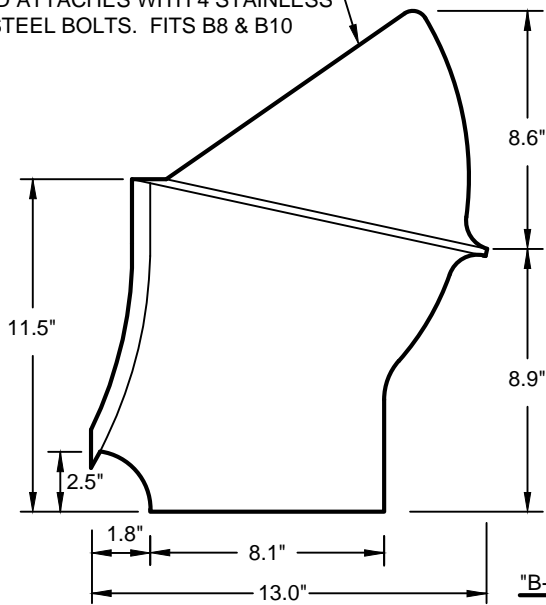


OPTIONAL HOOD FOR "B" SERIES  
HOOD ATTACHES WITH 4 STAINLESS  
STEEL BOLTS. FITS B8 & B10



**MODEL #**

- B8DB - 18" DROP BOWL WITH 8" OUTLET - USE FOR 4' - 5' DIA MH
- B8DBR84 - 18" DROP BOWL WITH 8" OUTLET - USE FOR 6' - 8' DIA MH
- B8DBR144 - 18" DROP BOWL WITH 8" OUTLET - USE FOR 9' - 12' DIA MH
- B10DB - 18" DROP BOWL WITH 10" OUTLET - USE FOR 4' - 5' DIA MH
- B10R96 - 18" DROP BOWL WITH 10" OUTLET - USE FOR 6' - 8' DIA MH
- B10R144 - 18" DROP BOWL WITH 10" OUTLET - USE FOR 9' - 12' DIA MH

THE "B-8" BOWL WILL SERVICE UP THROUGH FULL 10" INLETS. THE "B-10" BOWL WILL SERVICE UP THROUGH FULL 12" INLETS. CAN BE USED FOR 15" AND 16" INLET MODERATE FLOWS. ALL SIZES ARE FOR RETROFIT OR NEW CONSTRUCTION. FABRICATED IN MARINE GRADE FIBERGLASS AND FINISHED IN BRIGHT WHITE GEL COAT.

USE 4 RELINER ANCHOR ASSEMBLIES TO ATTACH DROP BOWL TO MANHOLE WALL. USE RELINER STAINLESS STEEL PIPE BRACKETS TO SUPPORT DOWN PIPE. EXTERNAL PIPE COUPLER REQUIRED. PROVIDE SWEEP AT DOWN PIPE OUTLET.

MADE IN U.S.A.  
U.S. PAT. # 6074130  
CANADIAN PAT. # 2269565

<b>RELINER / DURAN, INC.</b>		
53 MT. ARCHER ROAD, LYME, CT. 06371 (800) 508-6001 FAX: (877)434-3191 WWW.RELINER.COM		
DESCRIPTION	DATE	SCALE
B8 & B10 DROP BOWLS FOR ROUND WALLS	11/28/16	NONE
DRAWING NUMBER		
B8DB B10DB		